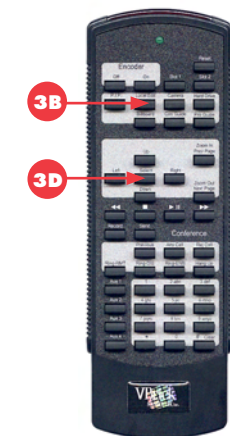
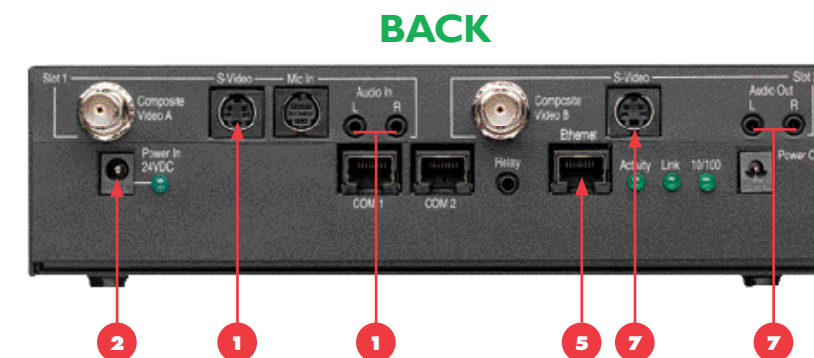
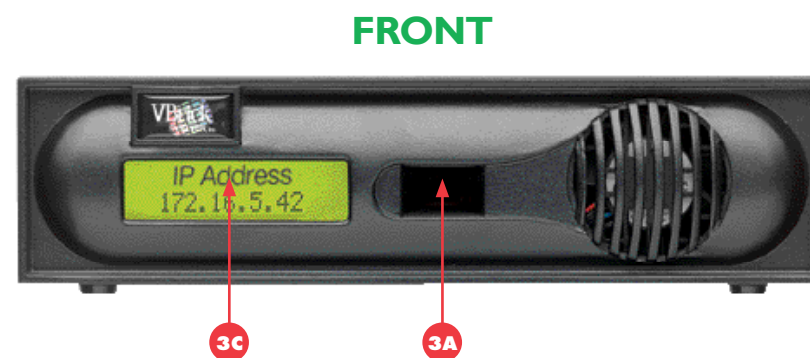


# Quick Start Guide

# MPEG-2 Network Appliance

## Unpack VBrick Appliance. Each Shipment Includes:



## 1

This document explains how to quickly verify that you can stream audio and video from your VBrick Network Appliance over your local network. This side explains the steps for MPEG-2 appliances; the other side explains MPEG-4. *Make sure you are using the right Quick Start Guide.* Verify the VBrick appliance "type" by checking the rear panel. Each slot is labelled MPEG-2, MPEG-4, or WM.

## Connect Video Input Source

An audio/video cable allows the VBrick appliance to receive audio/video from your input source (a camera, VCR, DVD, etc.)

1. From a video input source (for example, a camera, DVD, or VCR), connect a BNC (composite video) cable to **Composite In** on Slot 1 of the VBrick appliance using the supplied cables and adapters.
2. Connect **Left** and **Right** cables from the audio source to **Audio In** on the appliance.

## 2

### Connect to the IP Network

An Ethernet cable connects the VBrick to the network.

1. Plug one end of the cable into the Ethernet port on the VBrick appliance.
2. Plug the other end of the cable into the network switch.
3. When power is applied, the green LEDs to the right of the Ethernet port will illuminate and the **Activity** light will flicker.

#### System Requirements

- Ethernet LAN
- Multicast IGMP Version 2 or higher
- Windows 2000, XP (Service Pack 2 recommended)
- 500 MHz Pentium III processor (750 MHz recommended)
- 128 MB RAM
- SVGA video card 640x480, 256 colors or better (acceleration recommended)
- Windows-compatible sound device
- Minimum 5 MB hard disk space for installation
- Microsoft Internet Explorer 6.0 or higher
- Microsoft DirectX Media 8.1 or higher
- Microsoft Windows Media Player Version 7.1 (Windows 2000), 9.0 or higher (Windows XP)

## 3

### Power-on the Appliance

When powered-on, the VBrick appliance automatically runs through a self-test.

1. Insert the power connector that comes with the unit into the power receptacle on the rear of the appliance.
2. Connect the other end to a conventional 110/220 VAC power source.
3. The **Power In** LED on the back of VBrick will illuminate and the front panel will display status messages during the self-test.
4. **Wait until the appliance completes its boot sequence before continuing.** This may take 1-3 minutes.

## 4

### Set the IP Address

When you power on the appliance, if a DHCP server is present on your network, the VBrick will automatically get its **IP Address** and **Subnet Mask** from the DHCP server. If this happens, no additional configuration is required; go to Step 5. If the VBrick cannot get an IP address from the DHCP server (or a server is not present), you will need to set the IP address manually using the handheld IR Remote Control. Similarly, if your network requires a **Gateway IP Address**, and this is not provided by the DHCP server, you will also need to enter this manually.

1. Aim the remote control at the IR Port (reference 3A) on the front panel and press **Local Edit** (reference 3B). The display (reference 3C) on the front of the VBrick will request a password.
2. Press 23646 ("admin", numerically) and press **Select** (reference 3D) on the remote control.
3. If the network is DHCP capable and you want the network to provide an IP address press **Y** and then press **Select**. The VBrick will reboot and try to obtain an IP address. Otherwise press **N** (6) and **Select** to continue to Step 4.
4. Enter desired IP address. Use the \* button for the decimal point and the left/right buttons to erase characters entered by mistake.
5. When done press **Select**. If the remaining settings do not need to be modified, press **Select** again. If the IP, subnet mask or gateway addresses have been modified and there are no errors, the VBrick will reboot.
6. Set the **Slot1 Destination IP** address to a valid multicast address.

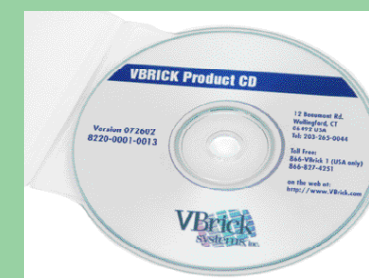
**Note:** The standard multicast address range is 224.0.0.0 to 239.255.255.255. VBrick recommends using 225.1.1.1 as a starting multicast address.

## 5

### Install StreamPlayer Plus

StreamPlayer Plus 4.3 or higher lets you receive streaming video, originating from the VBrick, on a local PC.

1. If you did not order StreamPlayer you can purchase and download a full copy or you can install the 30-day evaluation copy that is included on the Product CD. *You will still need to download a 30-day License file before you can install StreamPlayer.*
2. To download StreamPlayer or a License file, go to [www.vbrick.com/products/software.asp](http://www.vbrick.com/products/software.asp) and follow the instructions.
3. After you download StreamPlayer, follow the instructions and install the application as directed.



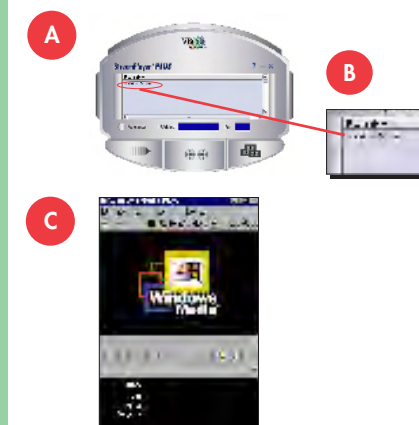
**Note:** The MPEG-2 Appliance Admin Guide provides a detailed description of product features and functions. It's available on the Product CD or it can be accessed from the Help link in the IWS configuration program.

## 6

### Verify Operation

The StreamPlayer Plus application is used to view the content being streamed by the VBrick appliance.

1. Launch the StreamPlayer Plus application. The application resides in the Programs folder. Go to **Start > All Programs > VBrick > StreamPlayer Plus**.
2. The VBrick appliance will multicast program information (reference A) to the StreamPlayer Plus application running on your PC.
3. You should see a stream appear in the **Program Info** column (reference B) of the StreamPlayer Plus application. The default stream name of the VBrick is the unit's MAC address.
4. Double click on this stream to launch Windows Media Player (reference C) and display the selected video stream on your PC.
5. You are now successfully streaming video to the PC.



## 7

### Connect Output Audio/Video Source to Monitor (Optional)

If you want to view the output from the VBrick directly on a monitor (VBrick 6200 only)

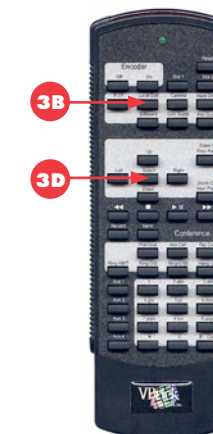
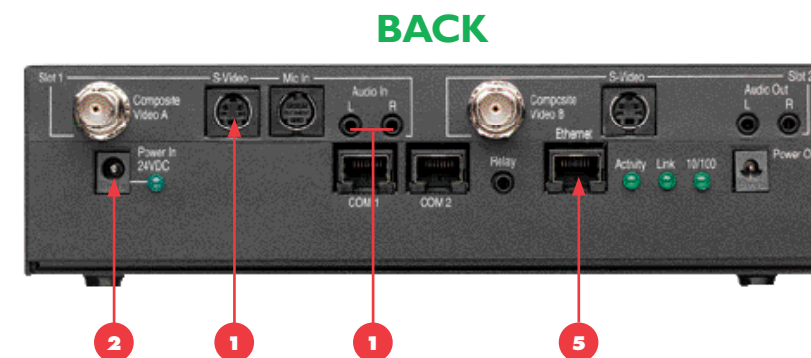
1. Connect Video Out of the VBrick (Slot 2) to a Video Monitor using BNC (composite video) or S-Video cable.
2. Connect Audio Left and Right out to the monitor.
3. Press the **Pro Guide** button on your VBrick IR remote control to see the built-in program guide.
4. Use the **Up** or **Down** buttons to highlight your Encoder's stream and press **Select** to view it. The default stream name starts with unit's MAC address.



# Quick Start Guide

# MPEG-4 Network Appliance

## Unpack VBrick Appliance. Each Shipment Includes:



## 1

This document explains how to quickly verify that you can stream audio and video from your VBrick Network Appliance over your local network. This side explains the steps for MPEG-4 appliances; the other side explains MPEG-2. *Make sure you are using the right Quick Start Guide.* Verify the VBrick appliance "type" by checking the rear panel. Each slot is labelled MPEG-2, MPEG-4, or WM.

## Connect Video Input Source

An audio/video cable allows the VBrick appliance to receive audio/video from your input source (a camera, VCR, DVD, etc.)

- From a video input source (for example, a camera, DVD, or VCR), connect a BNC (composite video) cable to **Composite In** on Slot 1 of the VBrick appliance using the supplied cables and adapters.
- Connect **Left** and **Right** cables from the audio source to **Audio In** on the appliance.

## 2

### Connect to the IP Network

An Ethernet cable connects the VBrick to the network.

- Plug one end of the cable into the Ethernet port on the VBrick appliance.
- Plug the other end of the cable into the network switch.
- When power is applied, the green LEDs to the right of the Ethernet port will illuminate and the **Activity** light will flicker.

#### System Requirements

- Ethernet LAN
- Windows 2000, Windows XP (Service Pack 2 recommended)
- 500 MHz Pentium III processor (750 MHz recommended)
- 128 MB RAM
- SVGA video card 640x480, 256 colors or better (acceleration recommended)
- Windows-compatible sound device
- Minimum 5 MB hard disk space for installation
- Microsoft Internet Explorer 6.0 or higher
- Microsoft DirectX Media 8.1 or higher
- Microsoft Windows Media Player Version 7.1 (Windows 2000), 9.0 or higher (Windows XP)

## 3

### Power-on the Appliance

When powered-on, the VBrick appliance automatically runs through a self-test.

- Insert the power connector that comes with the unit into the power receptacle on the rear of the appliance.
- Connect the other end to a conventional 110/220 VAC power source.
- The **Power In** LED on the back of VBrick will illuminate and the front panel will display status messages during the self-test.
- Wait until the appliance completes its boot sequence before continuing.** This may take 1-3 minutes.

## 4

### Set the IP Address

When you power on the appliance, if a DHCP server is present on your network, the VBrick will automatically get its **IP Address** and **Subnet Mask** from the DHCP server. If this happens, no additional configuration is required; go to Step 5. If the VBrick cannot get an IP address from the DHCP server (or a server is not present), you will need to set the IP address manually using the handheld IR Remote Control. Similarly, if your network requires a **Gateway IP Address**, and this is not provided by the DHCP server, you will also need to enter this manually.

- Aim the remote control at the IR Port (reference 3A) on the front panel and press **Local Edit** (reference 3B). The display (reference 3C) on the front of the VBrick will request a password.
- Press 23646 ("admin", numerically) and press **Select** (reference 3D) on the remote control.
- If the network is DHCP capable and you want the network to select an IP address press **Y** and then press **Select**. The VBrick will reboot and obtain an IP address. Otherwise, press **Select** to continue.
- Enter desired IP address. Use the \* button for the decimal point and the left/right buttons to erase characters entered by mistake.
- When done press **Select**. If the remaining settings do not need to be modified, press **Select** again.
- If the IP, subnet mask or gateway addresses have been modified and there are no errors, the VBrick will reboot.

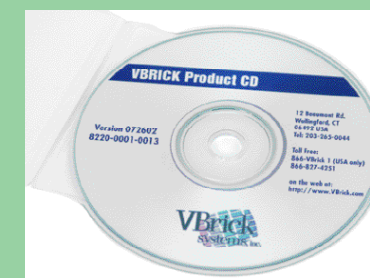
**Note:** The *MPEG-4 Appliance Admin Guide* provides a detailed description of product features and functions. It's available on the Product CD or it can be accessed from the Help link in the IWS configuration program.

## 5

### Install StreamPlayer Plus

StreamPlayer Plus 4.3 or higher lets you receive streaming video, originating from the VBrick, on a local PC.

- If you did not order StreamPlayer you can purchase and download a full copy or you can install the 30-day evaluation copy that is included on the Product CD. *You will still need to download a 30-day License file before you can install StreamPlayer.*
- To download StreamPlayer or a License file, go to [www.vbrick.com/products/software.asp](http://www.vbrick.com/products/software.asp) and follow the instructions.
- After you download StreamPlayer, follow the instructions and install the application as directed.



## 6

### Verify Operation

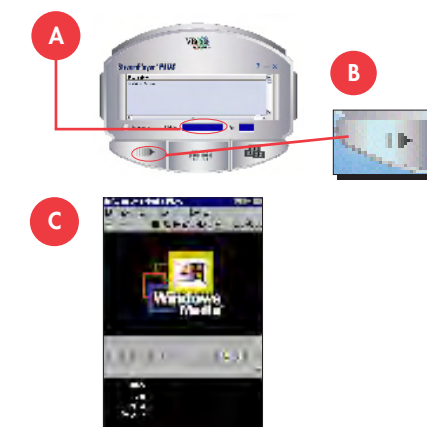
The StreamPlayer Plus application is used to view the content being streamed by the VBrick appliance.

- Launch the StreamPlayer Plus application. The application resides in the Programs folder. Go to **Start > All Programs > VBrick > StreamPlayer Plus**.
- To request the audio/video stream enter the following command in Box #1 (reference A).  
**RTSP://actual IP address of VBrick appliance/VBrickvideo1**

The RTSP command consists of the VBrick's network IP address and a user supplied program name. The default program name is VBrickvideo1.

- Click the play button (reference B) to launch Windows Media Player (reference C) and display the video stream on the PC.
- You are now successfully streaming audio and video to the PC.

*Note: You should be able to use the same RTSP command for other media players as well.*



12 Beaumont Road  
Wallingford, CT 06492 USA  
[www.VBrick.com](http://www.VBrick.com)